



To learn more and view our
customer gallery visit us at

www.carveright.ca

Or Call Us at 1-888-874-8661





Create any Design You can Imagine

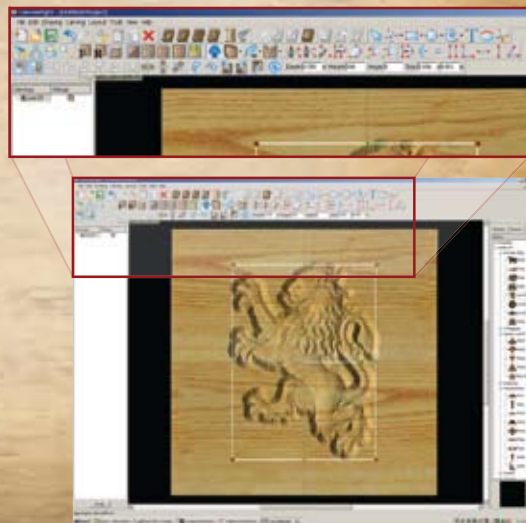
- **Unlimited Design Capabilities** - The CarveWright™ Woodworking System was developed by NASA robotics engineers as a simple way for anyone to create complex carvings. From custom signs, detailed reliefs for mantles and cabinetry to sophisticated friezes and extravagant works of art. With this compact machine, you can make furniture to accent your entire house! Wine cabinets, patio chairs, cigar and jewelry boxes, desks, and tables. The list goes on and on with this amazing machine and it's endless possibilities!



- **Easy to Use** - The CarveWright has an onboard computer that makes using the machine quick and easy. Projects created using the CarveWright Project Designer software are saved to a special memory card that slides right into the machine. An onboard LCD display provides step-by-step instruction to move effortlessly through projects as precision sensors automatically measure the workpiece and detect the position of the bit.
- **Compact** - The CarveWright has a patented rising head and feed through configuration allowing it to handle work pieces up to 14.5" wide, 5" thick and essentially any length desired while being small enough to fit on a desk!

CarveWright Project Designer

- **Simple** - You don't have to be a master craftsman. Anyone can understand the simple, point-and-click format of the CarveWright Project Designer software. The software has the power of a complex CAD package, but the ease of use of a paint program.
- **Design Elements Ready to Use** - Arrange, combine, even alter elements from the extensive 3D pattern library. Easily raster, outline, or Center-Line* text using the fonts already on your computer for a variety of effects.
- **Import Designs or Create Your Own** - The CarveWright Project Designer software allows you to import and manipulate images to suit your needs, or draw out your own designs using the 2D drawing capabilities.



Accessories

The Scanning Probe*

- **Scan An Object and Reproduce It** - The CarveWright Scanning Probe opens up the world of 3D scanning to anyone. Reproduce original pieces, repair antique furniture, even copy trim and moldings with ease. Just plug the Probe into the CarveWright, set the desired scan area and watch it go to work.
- **High Resolution** - Accurate within .005 of an inch and able to scan practically any material.
- **Manipulate & Edit the Scanned Image** - The Pattern Editor software, included with the scanning probe, allows easy editing and manipulating of the scanned image. All this is possible and more with the CarveWright Scanning Probe.



Bit Sets*

Configured specifically for the CarveWright System, top quality all carbide bits are designed for long-life and precise cutting performance. A magnetic container allows for convenient storage, even on the side of the machine!



The CarveWright Pattern Depot

This one-stop shop features hundreds of unique patterns and projects. The CarveWright Pattern Depot is the largest searchable pattern library available to CarveWright owners. The integrated "try-before-you-buy" option allows users to try any design in the CarveWright Project Designer software before purchasing it. Continue to check the "Depot" often; New patterns and projects are added regularly.

Simply put, the CarveWright™ Woodworking System helps you bring your dreams to fruition, whether you are working on restoration, cabinetry, carvings, custom signs, or just crafts and hobbies. It was created to suit any project and any level of expertise.

*sold separately

www.carvewright.ca

www.carvewright.ca

